



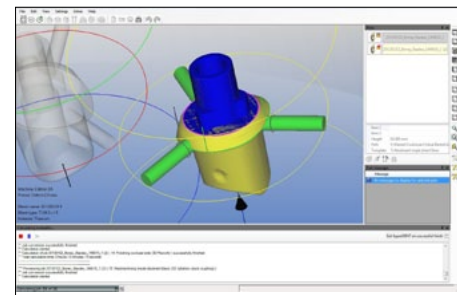
Dental Case Study

Dental Laboratory Group - Staten Island, NY

“Manufacturing Beautiful Smiles.”

Dental Laboratory Group, Inc. has always been at the forefront of the advancement of dental technology. Located in Staten Island, NY, their high-tech facility includes a full-service dental lab, a digital dental and manufacturing facility, and an on-site educational center for technicians and dentist practitioners.

They have partnered with DATRON to provide their customers with a complete catalog of milled dental parts. Integration was simple due to the compatibility with their existing scan and design process. At first, the D5 handled all of their zirconia production that was previously sent out to a milling center. This gave them more control, improved the quality of the final milled product and shortened turn-around times significantly. By incorporating Open Mind’s hyperDENT CAM software for the most accurate and precise tool path calculation, they have expanded their milling capabilities because they can receive design files from multiple scan systems. This maximizes their potential customer base and allows them to deliver a complete custom implant solution. Aside from their zirconia production, they are currently concentrating on the manufacturing of single custom abutments, but are also developing their ability to mill implant bars and multi-unit screw-retained bridge structures.



Dental Laboratory Group Configuration

3Shape Scanner & CAD
Hyperdent CAM software
DATRON D5 dental mill

>>

Contact - Dental Laboratory Group
2 Teleport Drive, Suite 101
Staten Island, NY 10311
718.477.6270

 Made in Germany by DATRON AG

www.datron.com

 /datrondental

DATRON Dynamics, Inc.
115 Emerson Road
Milford, NH 03055

Tel.: 603.672.8890
Fax: 603.672.8067
www.datron.com