



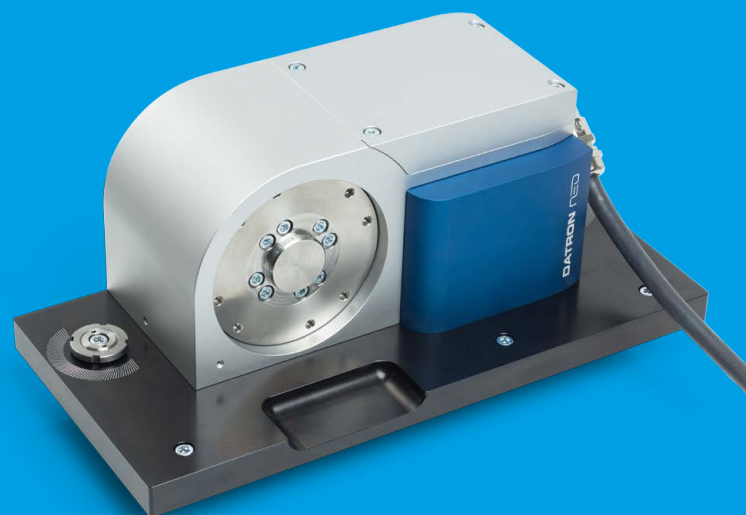
Application example: rotary axis with optional accessories

DATRON neo Rotary Axis Dynamic and Precise Fourth Axis

The anytime-retrofitable rotary axis expands the machining capabilities of the DATRON neo milling machine. Featuring a clamping mechanism, it allows for multi-sided processing and circular engraving. Developed, tested and manufactured by DATRON, the rotary axis integrates perfectly on the DATRON neo with high dynamics and precision.

PRODUCT FEATURES

- For greater capability:
 - multi-sided processing, circular engraving
- Dynamics and precision for excellent results
- Flexibility with optional accessories: three-jaw chuck, centric clamping device, tailstock
- Precise alignment with the XYZ sensor of DATRON neo
- Can be retrofitted at any time
- Easy positioning on the table through modular clamping technology
- Simple changeover between a 3-axis and 4-axis machine
- Plug-and-play connection on machining table



TECHNICAL DATA

Technical data

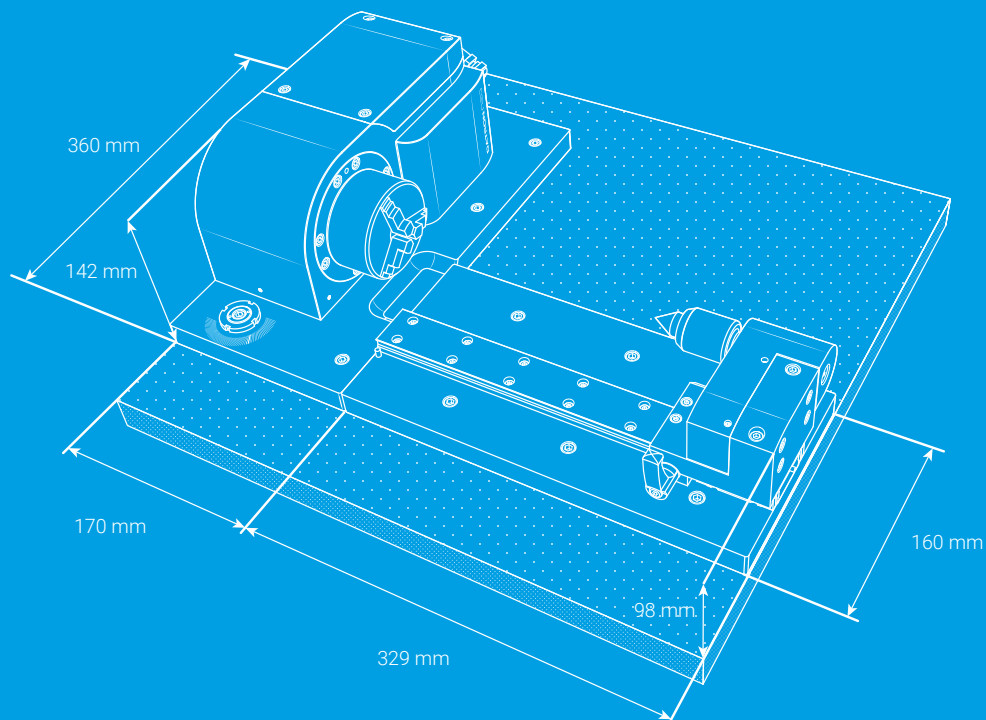
Tip height	55 - 75 mm (depending on the accessories and part geometry)
Seat	Plane surface with D=106 mm and centric fit (34h6)
Drive	200 W AC servo with multi-turn absolute value encoder
Gear	Free cycloidal gear
Gear ratio	79
Swivel range	Continuous rotary operation
Resolution	< 0.0001°
Positioning accuracy (P) according to VDI 3441	120 arcsec
Repeat accuracy (Ps mean) according to VDI 3441	30 arcsec
Speed (max.)	60 rpm
Dimensions (X x Y x Z)	170 mm x 360 mm x 142 mm
Weight (rotary axis)	Approx. 9.5 kg
Weight (with tailstock and three-jaw chuck)	Approx. 19 kg

Scope of delivery

Rotary axis on module clamping plate
Rotary axis control in separate control cabinet
Jumper plug for 3-axis operation

Installation

Simple mounting of the control cabinet for the rotary axis control
Installation and setup by customer possible (plug-and-play approach)
> Note: The installation and use of the rotary axis requires an expansion of the standard DATRON next software with the "4.Axis" option. Entering a licence key is required for this purpose.



OPTIONAL ACCESSORIES



neo three-jaw chuck
(item no. 0A03704C)

Key features

Dimensions (D x H):
106 mm x 63.5 mm

Tip height:
55 – 75 mm

Clamping range
(jaws tapered to the inside):
2 – 80 mm

Clamping range
(jaws tapered to the outside):
25 – 78 mm

Inner borehole (D x H):
19 mm x 40 mm

Clamping force (max.):
13 kN

Tightening torque (max.):
30 Nm

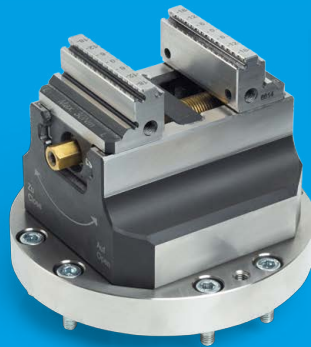
Scope of delivery

Three-jaw chuck, including mounting
flange

1x set jaws tapered to the inside
made of case-hardened steel

1x set jaws tapered to the outside
made of case-hardened steel

Lathe chuck spanner



neo centric clamping device
(item no. 0A03704D)

Key features

Dimensions (D x H):
106 mm x 80 mm

Tip height:
65 – 75 mm

Clamping range: 0 – 65 mm

Jaw width: 46 mm

Clamping force (max.): 6 kN

Tightening torque (max.):
30 Nm

Scope of delivery

Centric clamping device, including mounting
flange

Clamping key



neo tailstock
(item no. 0A03704B)

Key features

Dimensions (L x W x H):
329 mm x 160 mm x 98 mm

Tip height (max.):
55 mm

Tip height (max.): 210 mm

Seat: MK2

Centring tip diameter (max.): 65 mm

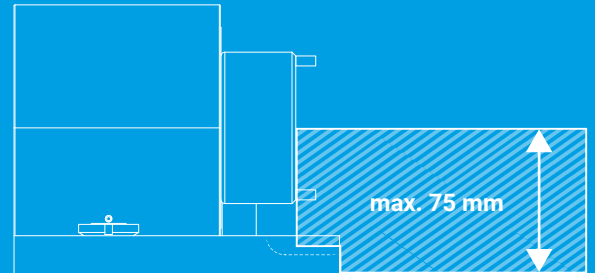
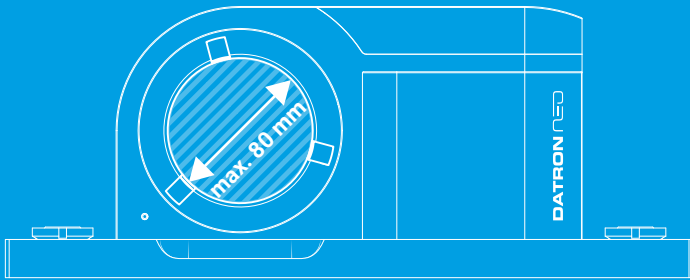
Scope of delivery

Tailstock, including module clamping plate

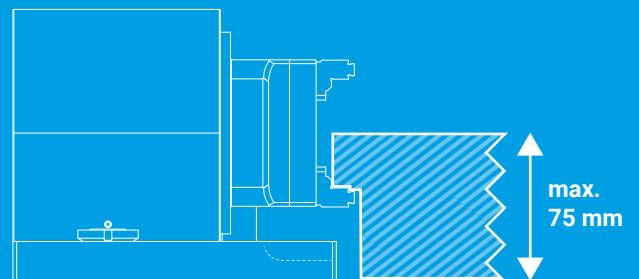
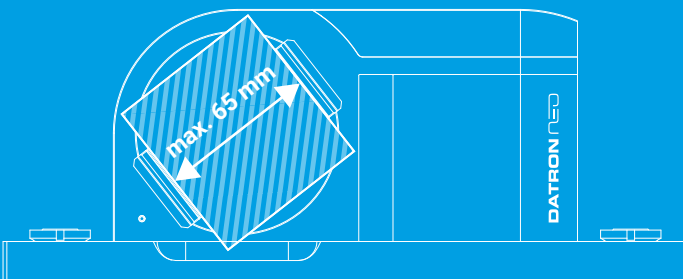
Live lathe centre (D 18 mm)

APPLICATION EXAMPLES:

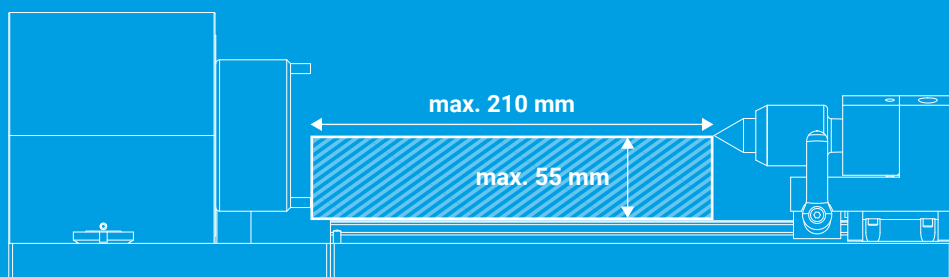
ROTARY AXIS WITH THREE-JAW CHUCK



ROTARY AXIS WITH CENTRIC CLAMPING DEVICE



ROTARY AXIS WITH TAILSTOCK



DATRON AG

In den Gänsäckern 5
64367 Mühlthal, Germany

Phone: +49(0)6151-1419-0

Fax: +49(0)6151-1419-690

www.datron.de

www.datron-neo.com

© 2017 DATRON AG - All rights reserved, Status: February 2017

Please observe our "Safety regulations when operating the machine." This document can be requested from DATRON or viewed under www.datron.de/sicherheit.

The information in this brochure includes current descriptions or performance features which are subject to change due to further development of the products. The descriptions and performance features are binding only if they are expressly agreed in writing at the time of conclusion of the contract. All prices in this brochure are net for end customers, not including value-added tax.

All information in the brochure is the property of DATRON AG or its licensees and is subject to the intellectual and commercial property rights or the rights holders. If you copy, print or publish this material, you state that you acknowledge all trademarks, references to copyrights and other property rights and that you will not edit them in any way. Apart from this restricted authorisation, DATRON AG does not grant any explicit or implicit rights or licences under any brands, copyrights or other rights in connection with intellectual or commercial property.